

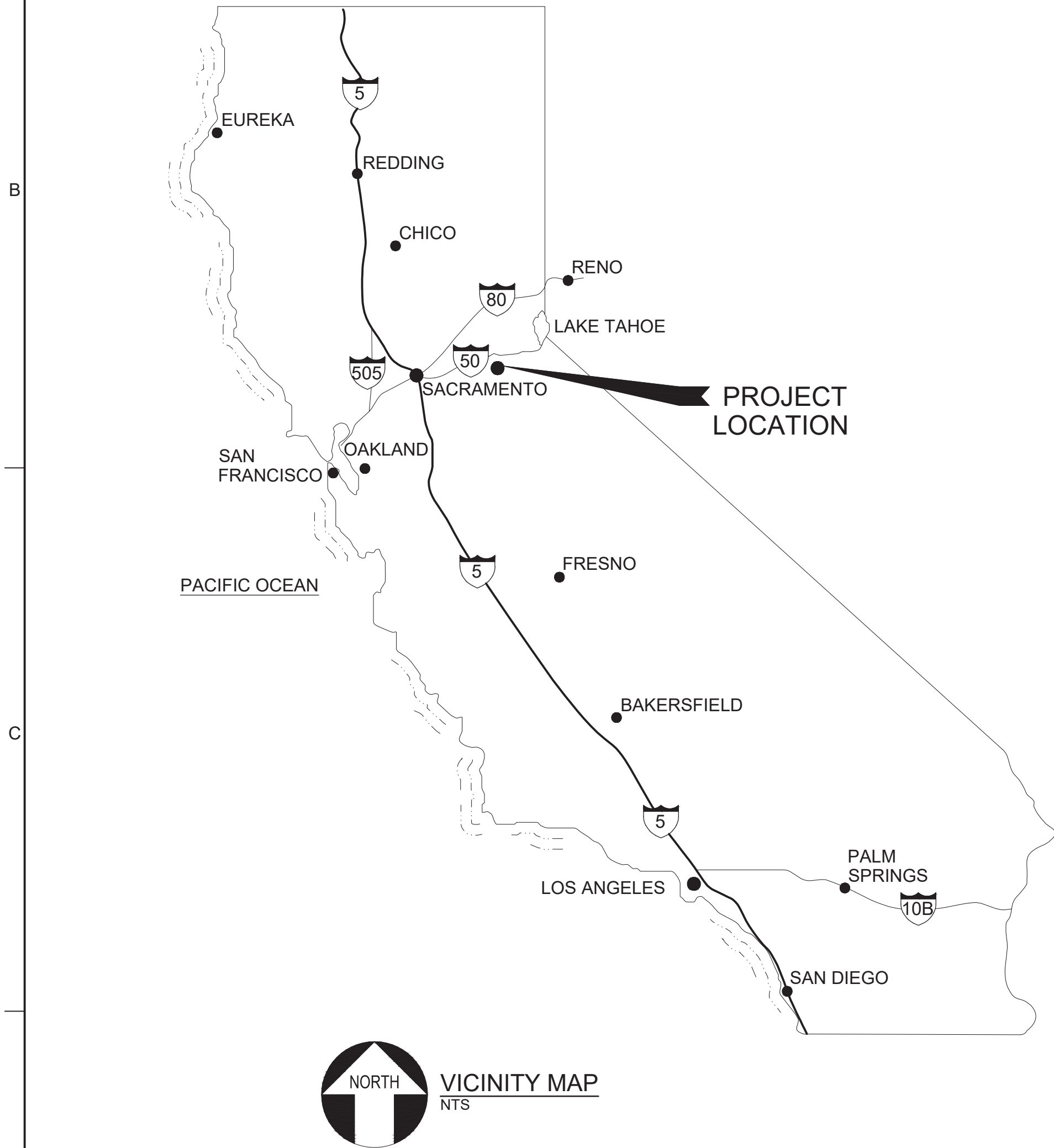
EL DORADO IRRIGATION DISTRICT

SLY PARK INTERTIE IMPROVEMENTS PROJECT

EID PROJECT NO. 21079.01
CONTRACT NO. E24-01

VOLUME 3: DRAWINGS
MARCH 2024

CONFORMED SET
(07/16/24)



BOARD OF DIRECTORS

- GEORGE OSBORNE - DIVISION 1
- PAT DWYER - DIVISION 2
- BRIAN K VEERKAMP - DIVISION 3
- LORI ANZINI - DIVISION 4
- ALAN DAY - DIVISION 5

JON MONEY, PE
ENGINEERING MANAGER
EL DORADO IRRIGATION DISTRICT

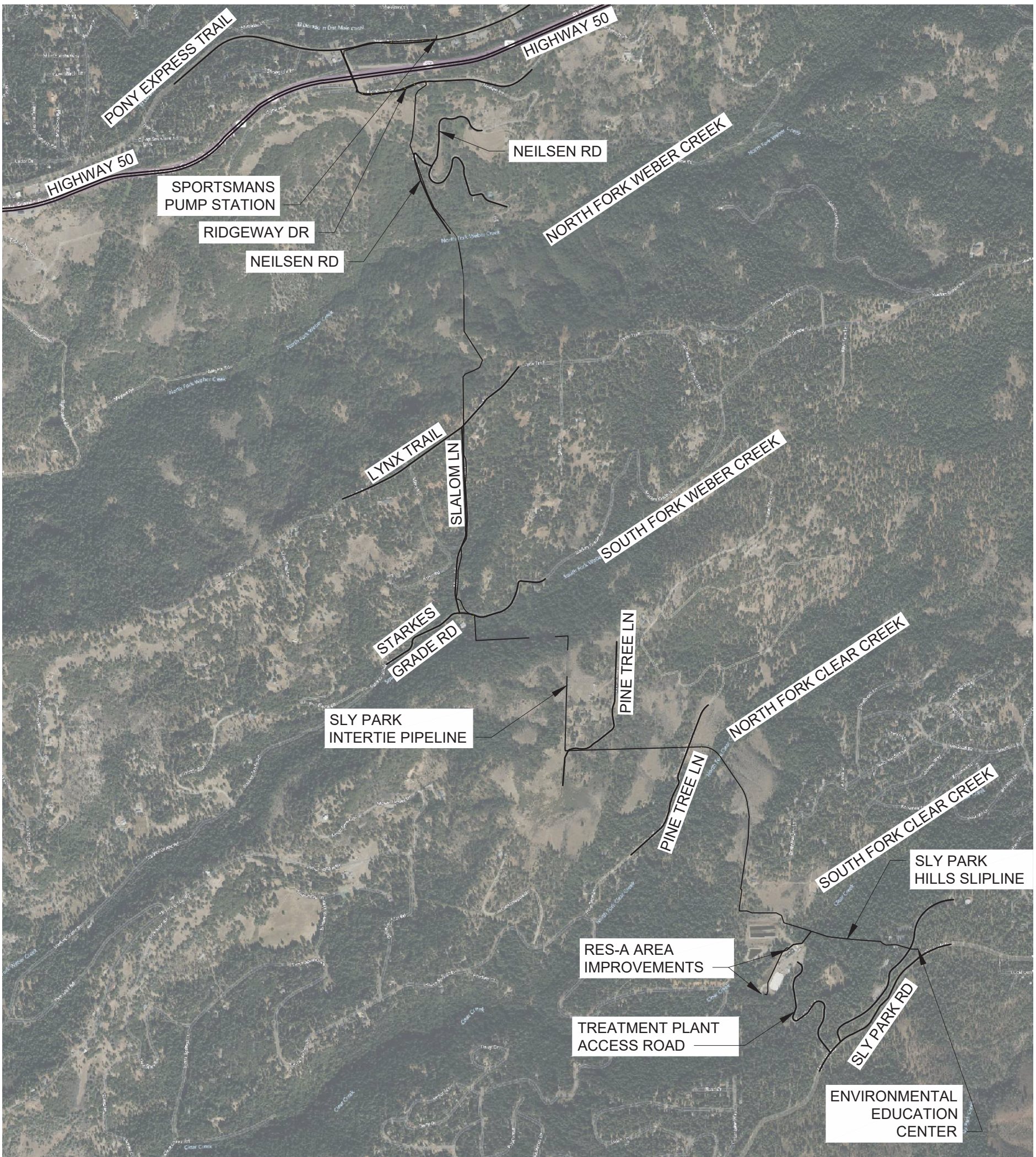
DATE

03/22/2024

MICHAEL J. FISHER, PE
PROJECT MANAGER
WATER WORKS ENGINEERS

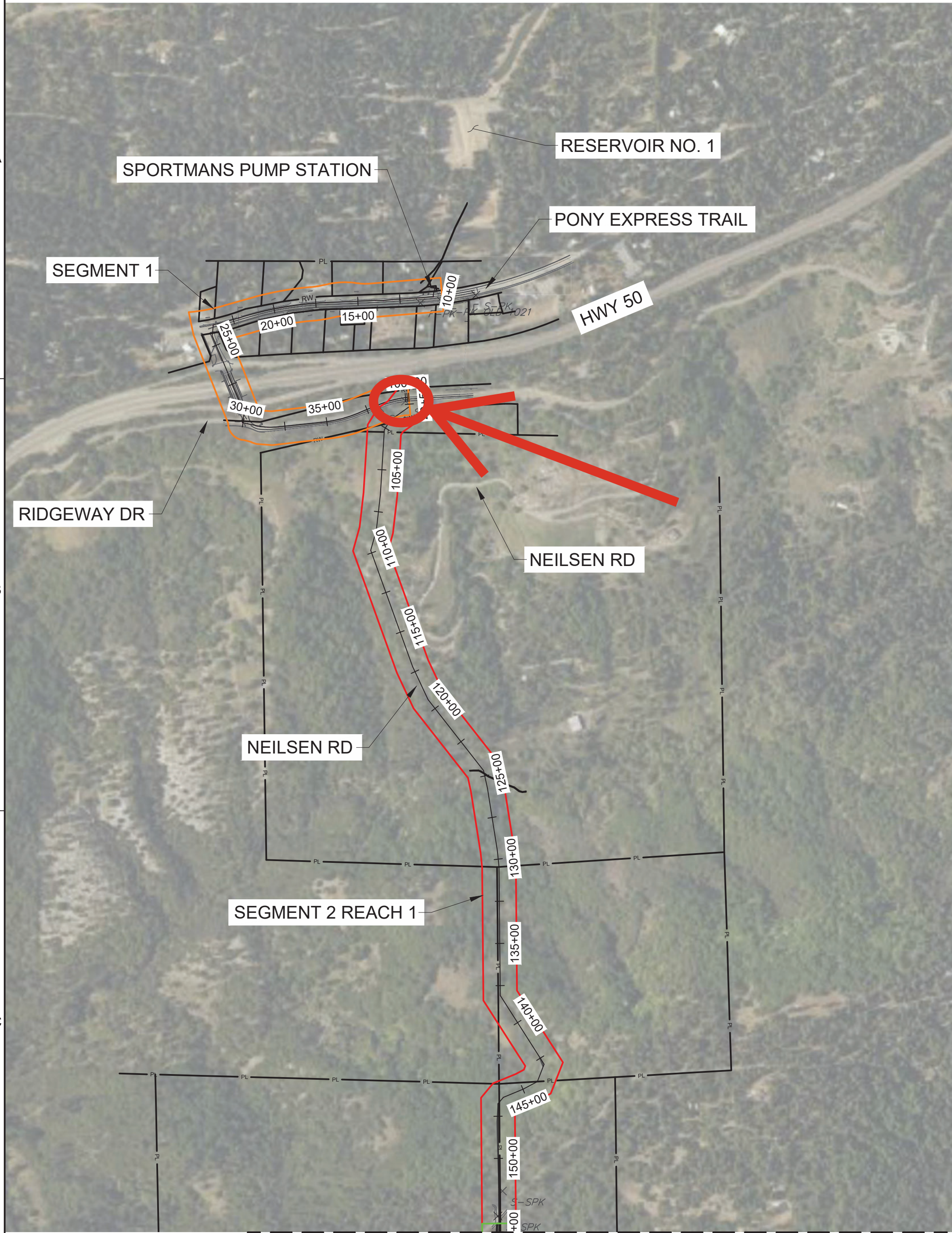
DATE

CONTRACTOR REQUIRED TO
PRINT IN COLOR



VERIFY SCALE																																																																																																																																																																																																																																																																																																																																																																																																																																																																																																																																																																																																																																																																																																																																																																																																																																																																																																																																																																																																																																																																																																																																																																																																																																																																																																																																																																																			
--------------	--	--	--	--	--	--	--	--	--	--	--	--	--	--	--	--	--	--	--	--	--	--	--	--	--	--	--	--	--	--	--	--	--	--	--	--	--	--	--	--	--	--	--	--	--	--	--	--	--	--	--	--	--	--	--	--	--	--	--	--	--	--	--	--	--	--	--	--	--	--	--	--	--	--	--	--	--	--	--	--	--	--	--	--	--	--	--	--	--	--	--	--	--	--	--	--	--	--	--	--	--	--	--	--	--	--	--	--	--	--	--	--	--	--	--	--	--	--	--	--	--	--	--	--	--	--	--	--	--	--	--	--	--	--	--	--	--	--	--	--	--	--	--	--	--	--	--	--	--	--	--	--	--	--	--	--	--	--	--	--	--	--	--	--	--	--	--	--	--	--	--	--	--	--	--	--	--	--	--	--	--	--	--	--	--	--	--	--	--	--	--	--	--	--	--	--	--	--	--	--	--	--	--	--	--	--	--	--	--	--	--	--	--	--	--	--	--	--	--	--	--	--	--	--	--	--	--	--	--	--	--	--	--	--	--	--	--	--	--	--	--	--	--	--	--	--	--	--	--	--	--	--	--	--	--	--	--	--	--	--	--	--	--	--	--	--	--	--	--	--	--	--	--	--	--	--	--	--	--	--	--	--	--	--	--	--	--	--	--	--	--	--	--	--	--	--	--	--	--	--	--	--	--	--	--	--	--	--	--	--	--	--	--	--	--	--	--	--	--	--	--	--	--	--	--	--	--	--	--	--	--	--	--	--	--	--	--	--	--	--	--	--	--	--	--	--	--	--	--	--	--	--	--	--	--	--	--	--	--	--	--	--	--	--	--	--	--	--	--	--	--	--	--	--	--	--	--	--	--	--	--	--	--	--	--	--	--	--	--	--	--	--	--	--	--	--	--	--	--	--	--	--	--	--	--	--	--	--	--	--	--	--	--	--	--	--	--	--	--	--	--	--	--	--	--	--	--	--	--	--	--	--	--	--	--	--	--	--	--	--	--	--	--	--	--	--	--	--	--	--	--	--	--	--	--	--	--	--	--	--	--	--	--	--	--	--	--	--	--	--	--	--	--	--	--	--	--	--	--	--	--	--	--	--	--	--	--	--	--	--	--	--	--	--	--	--	--	--	--	--	--	--	--	--	--	--	--	--	--	--	--	--	--	--	--	--	--	--	--	--	--	--	--	--	--	--	--	--	--	--	--	--	--	--	--	--	--	--	--	--	--	--	--	--	--	--	--	--	--	--	--	--	--	--	--	--	--	--	--	--	--	--	--	--	--	--	--	--	--	--	--	--	--	--	--	--	--	--	--	--	--	--	--	--	--	--	--	--	--	--	--	--	--	--	--	--	--	--	--	--	--	--	--	--	--	--	--	--	--	--	--	--	--	--	--	--	--	--	--	--	--	--	--	--	--	--	--	--	--	--	--	--	--	--	--	--	--	--	--	--	--	--	--	--	--	--	--	--	--	--	--	--	--	--	--	--	--	--	--	--	--	--	--	--	--	--	--	--	--	--	--	--	--	--	--	--	--	--	--	--	--	--	--	--	--	--	--	--	--	--	--	--	--	--	--	--	--	--	--	--	--	--	--	--	--	--	--	--	--	--	--	--	--	--	--	--	--	--	--	--	--	--	--	--	--	--	--	--	--	--	--	--	--	--	--	--	--	--	--	--	--	--	--	--	--	--	--	--	--	--	--	--	--	--	--	--	--	--	--	--	--	--	--	--	--	--	--	--	--	--	--	--	--	--	--	--	--	--	--	--	--	--	--	--	--	--	--	--	--	--	--	--	--	--	--	--	--	--	--	--	--	--	--	--	--	--	--	--	--	--	--	--	--	--	--	--	--	--	--	--	--	--	--	--	--	--	--	--	--	--	--	--	--	--	--	--	--	--	--	--	--	--	--	--	--	--	--	--	--	--	--	--	--	--	--	--	--	--	--	--	--	--	--	--	--	--	--	--	--	--	--	--	--	--	--	--	--	--	--	--	--	--	--	--	--	--	--	--	--	--	--	--	--	--	--	--	--	--	--	--	--	--	--	--	--	--	--	--	--	--	--	--	--	--	--	--	--	--	--	--	--	--	--	--	--	--	--	--	--	--	--	--	--	--	--	--	--	--	--	--	--	--	--	--	--	--	--	--	--	--	--	--	--	--	--	--	--	--	--	--	--	--	--	--	--	--	--	--	--	--	--	--	--	--	--	--	--	--	--	--	--	--	--	--	--	--	--	--	--	--	--	--	--	--	--	--	--	--	--	--	--	--	--	--	--	--	--	--	--	--	--	--	--	--	--	--	--	--	--	--	--	--	--	--	--	--	--	--	--	--	--	--	--	--	--	--	--	--	--	--	--	--	--	--	--	--	--	--	--	--	--	--	--	--	--	--	--	--	--	--	--	--	--	--	--	--	--	--	--	--	--	--	--	--	--	--	--	--	--	--	--	--	--	--	--	--	--	--	--	--	--	--	--	--	--	--	--	--	--	--	--	--	--	--	--	--	--	--	--	--	--	--	--	--	--	--	--	--	--	--	--	--	--	--	--	--	--	--	--	--	--	--	--	--	--	--	--	--	--	--	--	--	--	--	--	--	--	--	--	--	--	--	--	--	--	--	--	--	--	--	--	--	--	--	--	--	--	--	--	--	--	--	--	--	--	--	--	--	--	--	--	--	--	--	--	--	--	--	--	--	--	--	--	--	--	--	--	--	--	--	--	--	--	--	--	--	--	--	--	--	--	--	--	--	--	--	--	--	--	--	--	--	--	--	--	--	--	--	--	--	--	--	--	--	--	--	--	--	--	--	--	--	--	--	--	--	--	--	--	--	--	--	--	--	--	--	--	--	--	--	--	--	--	--	--	--	--	--	--	--	--	--	--	--	--	--	--	--	--	--	--	--	--	--	--	--	--	--	--	--	--	--	--	--	--	--	--	--	--	--	--	--	--	--	--	--	--	--	--	--	--	--	--	--	--	--	--	--	--	--	--	--	--	--	--	--	--	--	--	--	--

CONFORMED SET (07/16/24)



LEGEND:

- SEGMENT 1
- SEGMENT 2 REACH 1
- SEGMENT 2 REACH 2
- SEGMENT 2 REACH 3
- SEGMENT 3
- SEGMENT 4

BENCHMARK ELEV:1831.17 FT (NAVD88)
GPS OBSERVATION BASED ON LEICA
SMARTNET BASE STATION CAPV IN
PLACERVILLE, CA, RTCM ID 3291

BASIS OF BEARINGS:
CALIFORNIA STATE PLANE COORDINATES,
ZONE 2, NAD 83, US SURVEY FEET, BASED
ON GPS OBSERVATIONS

VERIFY SCALE

BAR IS ONE INCH ON
ORIGINAL DRAWING
0 1"
IF NOT ONE INCH ON
THIS SHEET, ADJUST
SCALES ACCORDINGLY

NO	DATE	REVISION	BY	APVD
	05/09/2024	ADDENDUM 3		
			AC	TL



DESIGN
P. WEBSTER
DRAWN
M. TRUITT
CHECKED
T. DURBIN
APPROVED
M. FISHER



WATERWORKS
ENGINEERS

ROSEVILLE, CA

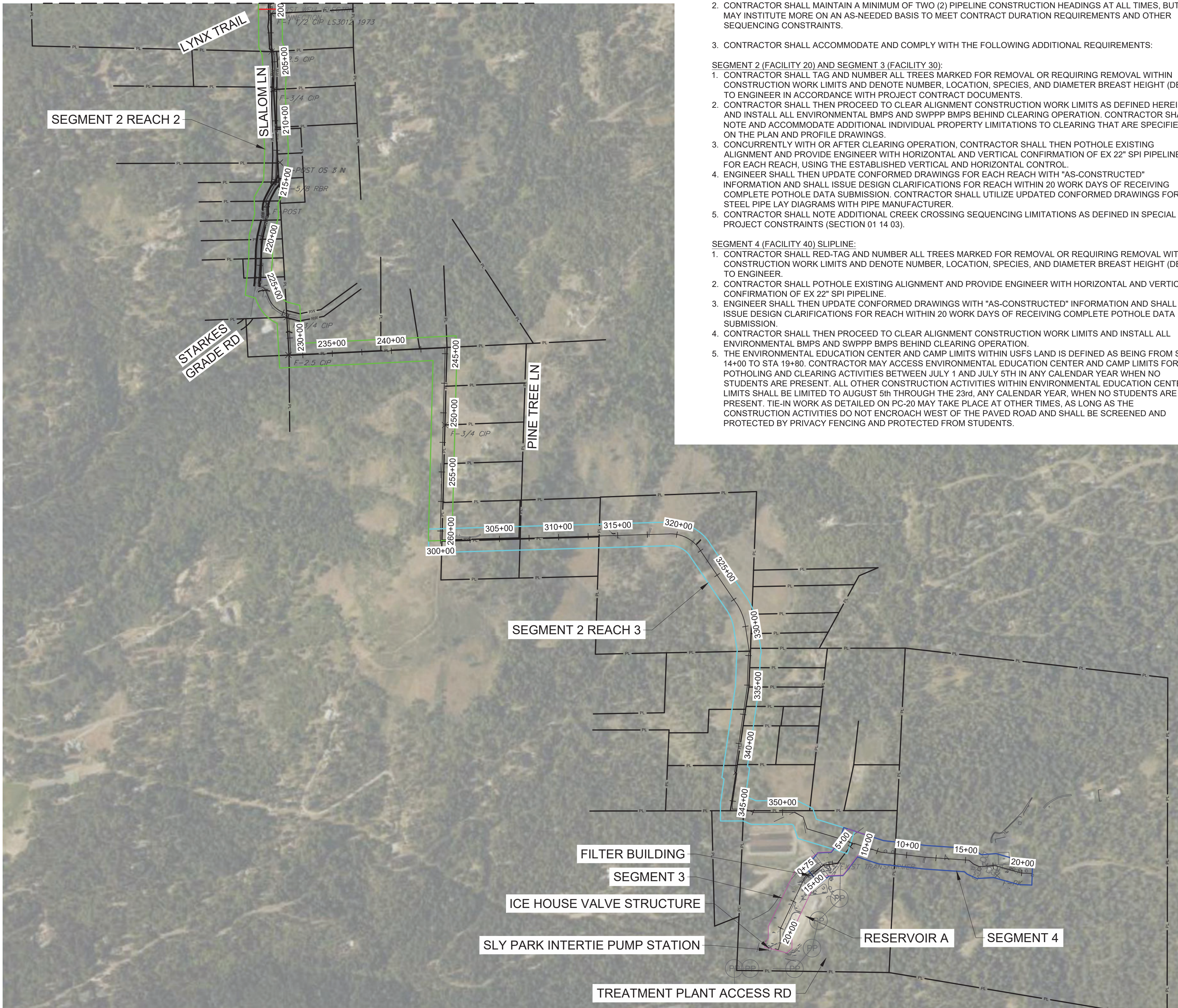


EL DORADO IRRIGATION DISTRICT
SLY PARK INTERTIE
IMPROVEMENTS PROJECT

PIPELINE CIVIL
INTERTIE PIPELINE SEGMENT
OVERVIEW MAP

PROJECT NO.
21079.01
DRAWING NO.
6513
SHEET NO.
PC-05
13 OF 266

MATCHLINE - SEE BELOW LEFT



SEQUENCING REQUIREMENTS:

- CONTRACTOR SHALL SUBMIT A SEQUENCING PLAN AND SCHEDULE THAT MEETS THE REQUIREMENTS OF THE KEY WORK SEQUENCING CONSTRAINTS AND WORK MILESTONES IN THE SPECIAL PROJECT CONSTRAINTS (SECTION 01 14 03).
- CONTRACTOR SHALL MAINTAIN A MINIMUM OF TWO (2) PIPELINE CONSTRUCTION HEADINGS AT ALL TIMES, BUT MAY INSTITUTE MORE ON AN AS-NEEDED BASIS TO MEET CONTRACT DURATION REQUIREMENTS AND OTHER SEQUENCING CONSTRAINTS.
- CONTRACTOR SHALL ACCOMMODATE AND COMPLY WITH THE FOLLOWING ADDITIONAL REQUIREMENTS:

SEGMENT 2 (FACILITY 20) AND SEGMENT 3 (FACILITY 30):

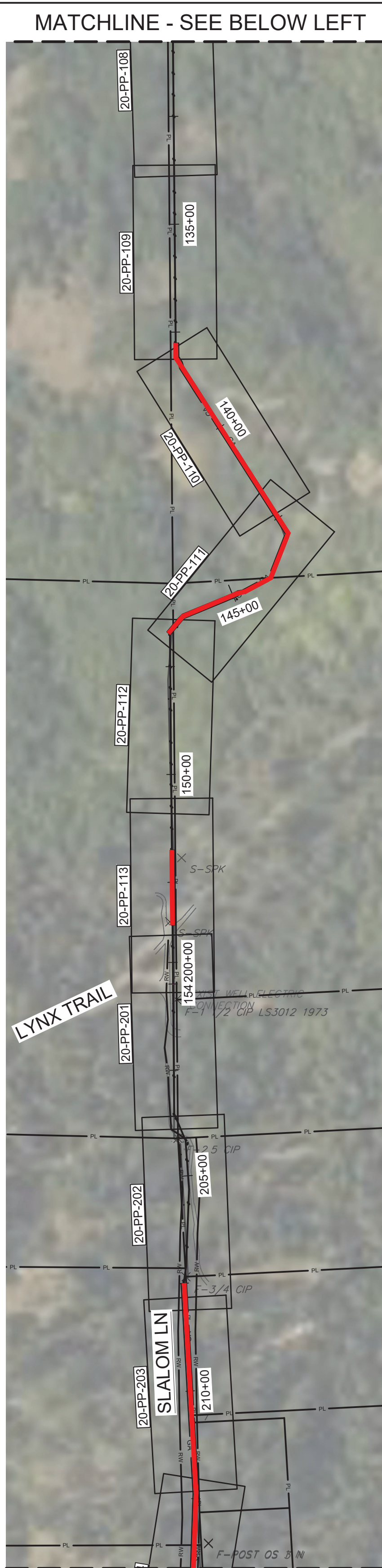
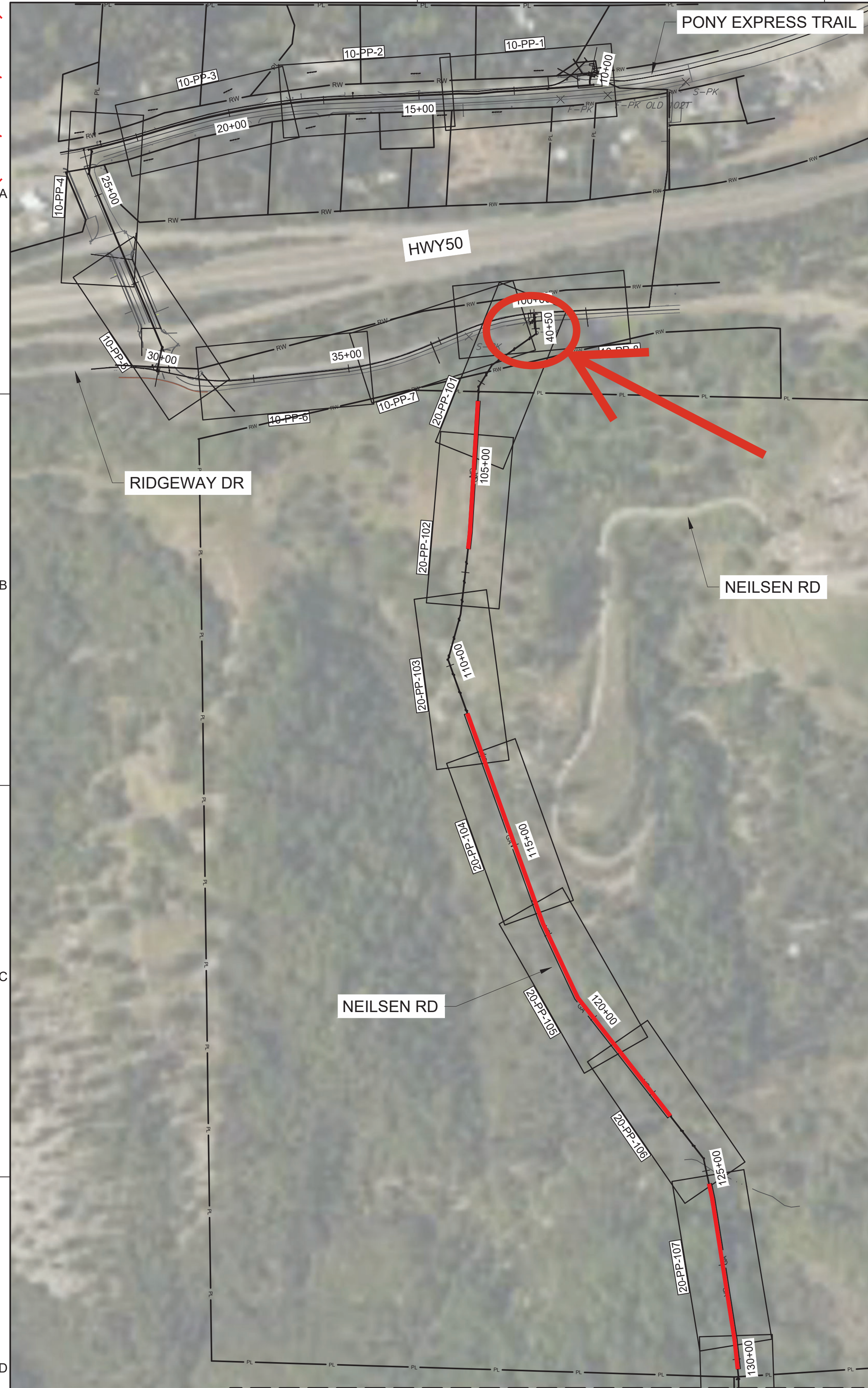
- CONTRACTOR SHALL TAG AND NUMBER ALL TREES MARKED FOR REMOVAL OR REQUIRING REMOVAL WITHIN CONSTRUCTION WORK LIMITS AND DENOTE NUMBER, LOCATION, SPECIES, AND DIAMETER BREAST HEIGHT (DBH) TO ENGINEER IN ACCORDANCE WITH PROJECT CONTRACT DOCUMENTS.
- CONTRACTOR SHALL THEN PROCEED TO CLEAR ALIGNMENT CONSTRUCTION WORK LIMITS AS DEFINED HEREIN, AND INSTALL ALL ENVIRONMENTAL BMPS AND SWPPP BMPS BEHIND CLEARING OPERATION. CONTRACTOR SHALL NOTE AND ACCOMMODATE ADDITIONAL INDIVIDUAL PROPERTY LIMITATIONS TO CLEARING THAT ARE SPECIFIED ON THE PLAN AND PROFILE DRAWINGS.
- CONCURRENTLY WITH OR AFTER CLEARING OPERATION, CONTRACTOR SHALL THEN POTHOLE EXISTING ALIGNMENT AND PROVIDE ENGINEER WITH HORIZONTAL AND VERTICAL CONFIRMATION OF EX 22" SPI PIPELINE FOR EACH REACH, USING THE ESTABLISHED VERTICAL AND HORIZONTAL CONTROL.
- ENGINEER SHALL THEN UPDATE CONFORMED DRAWINGS FOR EACH REACH WITH "AS-CONSTRUCTED" INFORMATION AND SHALL ISSUE DESIGN CLARIFICATIONS FOR REACH WITHIN 20 WORK DAYS OF RECEIVING COMPLETE POTHOLE DATA SUBMISSION. CONTRACTOR SHALL UTILIZE UPDATED CONFORMED DRAWINGS FOR STEEL PIPE LAY DIAGRAMS WITH PIPE MANUFACTURER.
- CONTRACTOR SHALL NOTE ADDITIONAL CREEK CROSSING SEQUENCING LIMITATIONS AS DEFINED IN SPECIAL PROJECT CONSTRAINTS (SECTION 01 14 03).

SEGMENT 4 (FACILITY 40) SLOPLINE:

- CONTRACTOR SHALL RED-TAG AND NUMBER ALL TREES MARKED FOR REMOVAL OR REQUIRING REMOVAL WITHIN CONSTRUCTION WORK LIMITS AND DENOTE NUMBER, LOCATION, SPECIES, AND DIAMETER BREAST HEIGHT (DBH) TO ENGINEER.
- CONTRACTOR SHALL POTHOLE EXISTING ALIGNMENT AND PROVIDE ENGINEER WITH HORIZONTAL AND VERTICAL CONFIRMATION OF EX 22" SPI PIPELINE.
- ENGINEER SHALL THEN UPDATE CONFORMED DRAWINGS WITH "AS-CONSTRUCTED" INFORMATION AND SHALL ISSUE DESIGN CLARIFICATIONS FOR REACH WITHIN 20 WORK DAYS OF RECEIVING COMPLETE POTHOLE DATA SUBMISSION.
- CONTRACTOR SHALL THEN PROCEED TO CLEAR ALIGNMENT CONSTRUCTION WORK LIMITS AND INSTALL ALL ENVIRONMENTAL BMPS AND SWPPP BMPS BEHIND CLEARING OPERATION.
- THE ENVIRONMENTAL EDUCATION CENTER AND CAMP LIMITS WITHIN USFS LAND IS DEFINED AS BEING FROM STA 14+00 TO STA 19+80. CONTRACTOR MAY ACCESS ENVIRONMENTAL EDUCATION CENTER AND CAMP LIMITS FOR POTHOLING AND CLEARING ACTIVITIES BETWEEN JULY 1 AND JULY 5TH IN ANY CALENDAR YEAR WHEN NO STUDENTS ARE PRESENT. ALL OTHER CONSTRUCTION ACTIVITIES WITHIN ENVIRONMENTAL EDUCATION CENTER LIMITS SHALL BE LIMITED TO AUGUST 5th THROUGH THE 23rd, ANY CALENDAR YEAR, WHEN NO STUDENTS ARE PRESENT. TIE-IN WORK AS DETAILED ON PC-20 MAY TAKE PLACE AT OTHER TIMES, AS LONG AS THE CONSTRUCTION ACTIVITIES DO NOT ENCROACH WEST OF THE PAVED ROAD AND SHALL BE SCREENED AND PROTECTED BY PRIVACY FENCING AND PROTECTED FROM STUDENTS.

500 0 500 1000 FEET
HORIZSCALE 1"=500'

CONFORMED SET (07/16/24)



LEGEND
GRAVEL ACCESS PER DWG PCSD-13



200 0 200 400 FEET
HORIZSCALE 1"=200'

VERIFY SCALE					
BAR IS ONE INCH ON ORIGINAL DRAWING					
0 1"					
IF NOT ONE INCH ON THIS SHEET, ADJUST SCALES ACCORDINGLY					
NO	DATE	REVISION	BY	APVD	



DESIGN P. WEBSTER
DRAWN M. TRUITT
CHECKED T. DURBIN
APPROVED M. FISHER



EL DORADO IRRIGATION DISTRICT
SLY PARK INTERTIE IMPROVEMENTS PROJECT

INTERTIE PIPELINE SEGMENT KEY MAP 1

PROJECT NO. 21079.01
DRAWING NO. 6513
SHEET NO. PC-06
14 OF 266

FILENAME: L:\CAD\PROJECTS\22-018 EID SLY PARK INTERTIE\DELIVERABLES\21218D-PC-6.DWG

PLOT DATE: March 8, 2024

PLOT TIME: 11:01 AM

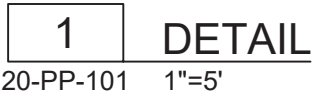


1. LIMIT WORK ACTIVITIES TO CONSTRUCTION WORK LIMITS (CWL), PUBLIC RIGHT-OF-WAY, AND STAGING AREAS DEFINED HEREIN. ACCESS TO CWL AND STAGING AREAS SHALL BE PER APPROVED ACCESS ROUTES.
2. COMPLY WITH CIVIL GENERAL NOTES AND PERMITTING GENERAL NOTES.
3. COMPLY WITH SEQUENCING REQUIREMENTS ON DWG PC-05.
4. COMPLY WITH ALL EDC ENCROACHMENT PERMIT REQUIREMENTS.
5. ASSUME A FULL SHUTDOWN OF RIDGEWAY DRIVE SHALL BE REQUIRED.

1. CONTRACTOR SHALL CONDUCT HIGH PRIORITY UTILITY VERIFICATION OF CONNECTION POINTS AND 2-LF BEYOND. VERIFY PIPE SIZE, ORIENTATION DEPTH, AND CL ELEV.
2. CONTRACTOR SHALL SUBMIT A SEQUENCING PLAN A MINIMUM OF 30 CALENDAR DAYS IN ADVANCE OF THE TIE-IN ACTIVITY TO OWNER FOR APPROVAL. PLAN SHALL INCLUDE STEP-BY-STEP PROCEDURE AND SHALL ACCOMMODATE THE FOLLOWING RESTRICTIONS:
 - 2.1. ACTIVITY SHALL NOT BE SCHEDULED WITHOUT OWNER WRITTEN APPROVAL AND A TWO (2) WEEK NOTIFICATION SHALL BE PROVIDED TO THE OWNER.
 - 2.2. CONTRACTOR SHALL DEMOLISH THE EXST 30"STL SPI TO THE LIMITS REQUIRED
 - 2.3. PRIMARY INTERNAL PIPE DEWATERING ACTIVITY SHALL BE COMPLETED BY OWNER ONLY. CONTRACTOR SHALL REMOVE COATING OF EXISTING 30"STL SPI PIPE AT CONNECTION POINT, THEN FULLY DEMOLISH PIPE, ONLY WHEN APPROVED BY OWNER.
 - 2.4. CONTRACTOR SHALL PARTIALLY EXCAVATE PIPE AND FIELD VERIFY DEMOLITION LIMITS, EXISTING PIPELINE SIZE AND MATERIAL AND REPLACEMENT MANIFOLD DIMENSIONS A MINIMUM 3 DAYS IN ADVANCE OF THE DEMOLITION ACTIVITY, AND PROVIDE CONFIRMATION TO OWNER OF READINESS.
3. A POTENTIAL TIE-IN SEQUENCE OF WORK IS SUMMARIZED BELOW AND IS NOT INTENDED TO DIRECT THE CONTRACTOR'S MEANS AND METHODS:
 - 3.1. PROVIDE 2 WEEK NOTICE.
 - 3.2. PRE-EXCAVATE DEMOLITION LIMITS.
 - 3.3. CONDUCT FINAL VERIFICATION AND PROVIDE 3 DAY NOTICE OF READINESS.
 - 3.4. HYDROSTATIC TEST AND DISINFECT MANIFOLD ABOVE GRADE.
 - 3.5. OWNER TO DEWATER PIPE.
 - 3.6. DEMOLISH PIPE, DISINFECT AND PREPARE CONNECTION POINTS.
 - 3.7. INSTALL MANIFOLDS.
 - 3.8. AFTER INITIAL CONCRETE MORTAR SET UP AT WELDS, INDICATE READINESS TO OWNER TO ACCEPT PRESSURIZATION.
 - 3.9. OWNER TO REFILL PIPE AND CONTRACTOR SHALL VISUALLY INSPECT MANIFOLD AND BYPASS FOR LEAKS.

1. INSTALL 24" SPI WSP PER DWG 20-PP-101.
2. INSTALL GROUNDWATER RELIEF DRAIN PER DWG PC-04 SCHEDULES AND VIA OPEN CUT CONSTRUCTION PER DTL 1/PCSD-05.
3. INSTALL THRUST BLOCKS PER DWG PC-4 SCHEDULES. THRUST BLOCK SYMBOLIZATION IS TYPICAL AND NOT TO SCALE. REFER TO THE SCHEDULE STANDARD DETAIL REFERENCE FOR ACTUAL SIZES.
4. TERMINATE EXST 30" SPI STL PIPE TEE AND INSTALL BLIND FLANGE VIA OPEN CUT CONSTRUCTION PER TRENCH DTL 1/PCSD-05. DEMOLISH EXST 30" SPI STL PIPE TO LIMITS SHOWN. ABANDON EXST 30" SPI STL PIPE PER DWG PCSD-12.
5. INSTALL 15'L DUAL #2 AWG HMWPE JOINT BOND WIRES AND CONNECT EXST 30" TEE TO 24" SPI WSP PER DTL 3/45-CP-7.
6. CONNECT TO EXST 24" BFV (FLXFL). USE INSULATED FLANGE. MATCH CROWNS. SEET TIE IN NOTES. VERIFY CONTINUITY TO MOOSE HALL DIP PIPELINE.
7. FIRE HYDRANT ASSEMBLY PER DWG 20-PP-101.
8. STA 100+25 VALVES AND APPURTENANCES PER DWG 20-PP-101.
9. INSTALL TEST STATION PER TEST STATION SCHEDULE ON DWG CP-1.
10.

REPLACE ALL AC PAVEMENT WITHIN LIMITS PER EDC STD PLAN 119. RECONSTRUCT SHOULDERS IN KIND. REPLACE AC DIKE IN KIND.



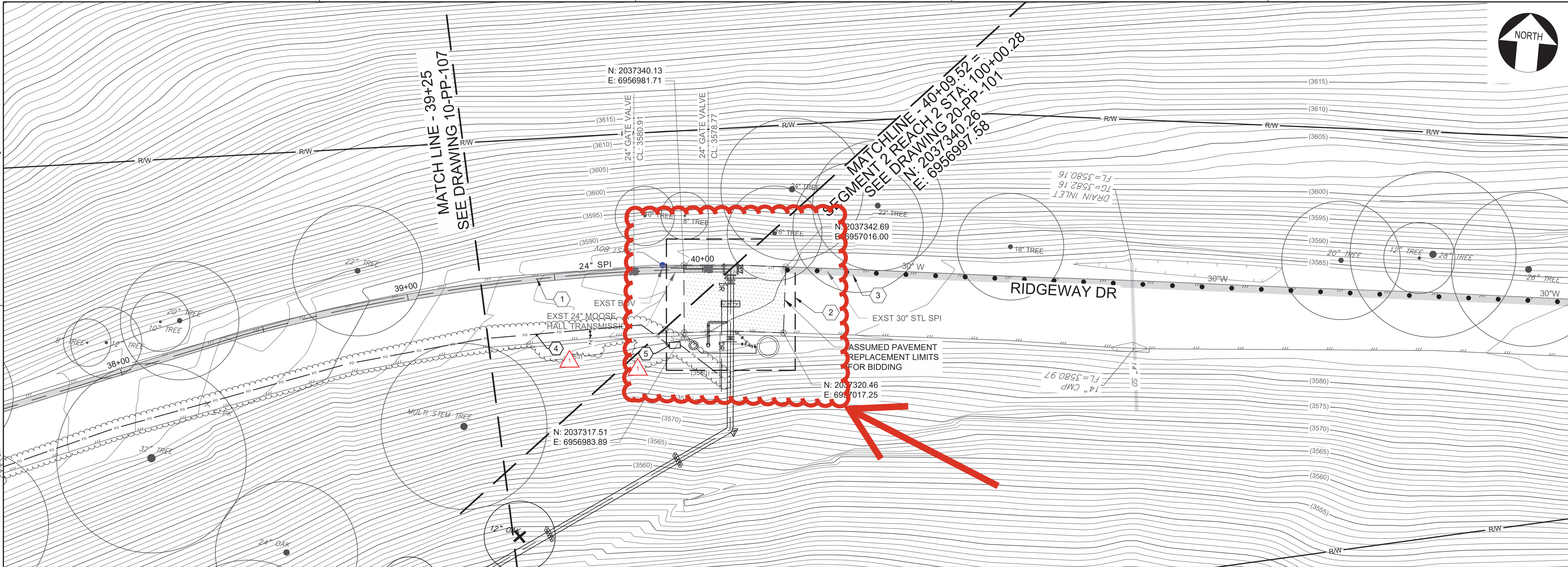
PROJECT NO.
21079.01

DRAWING NO.
6513

SHEET NO.
PC-19

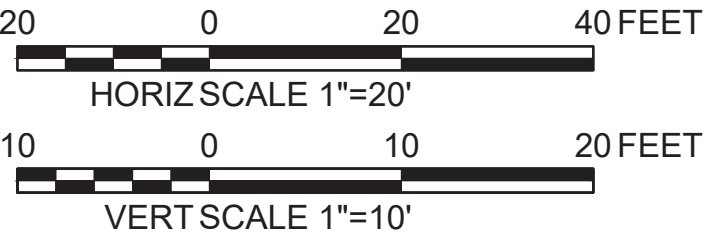
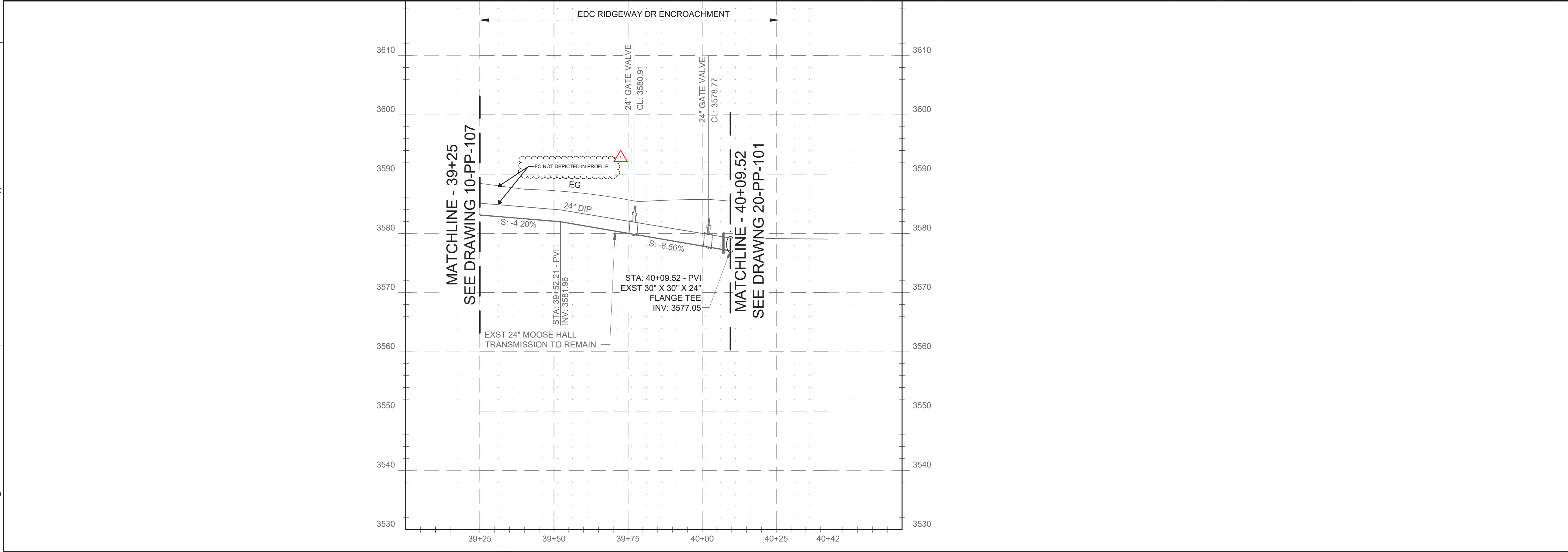
27 OF 266

CONFORMED SET (07/16/24)



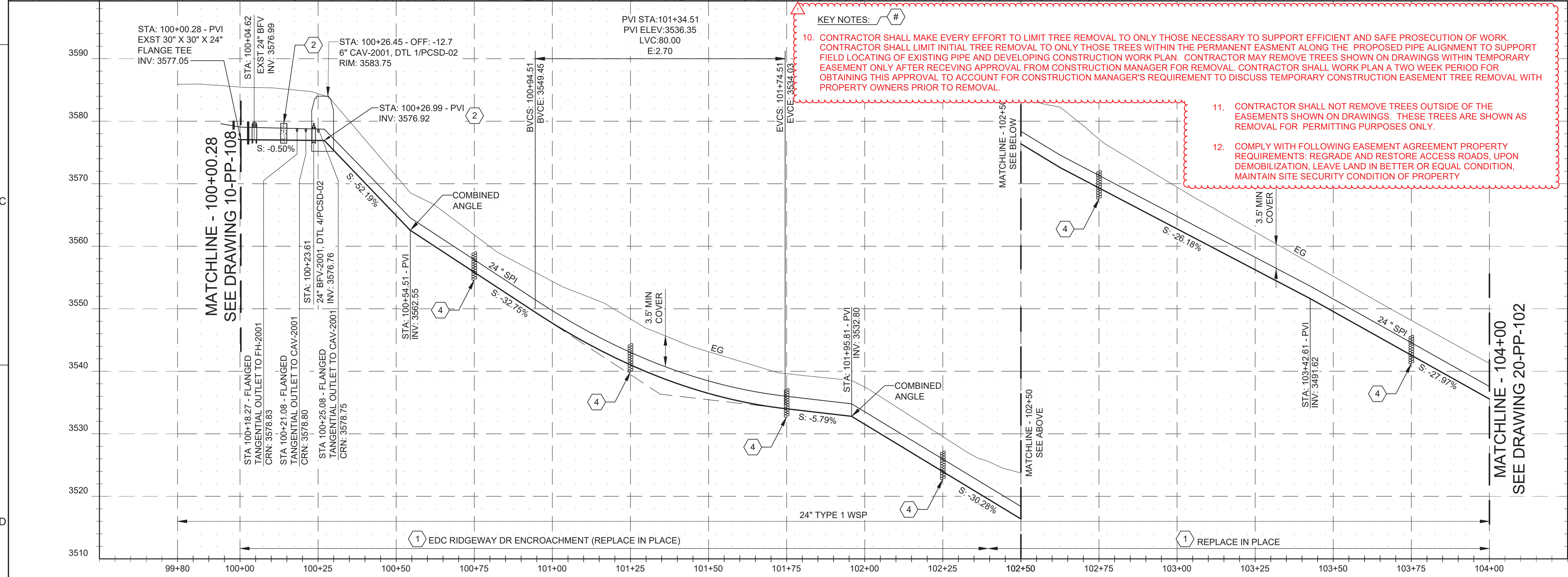
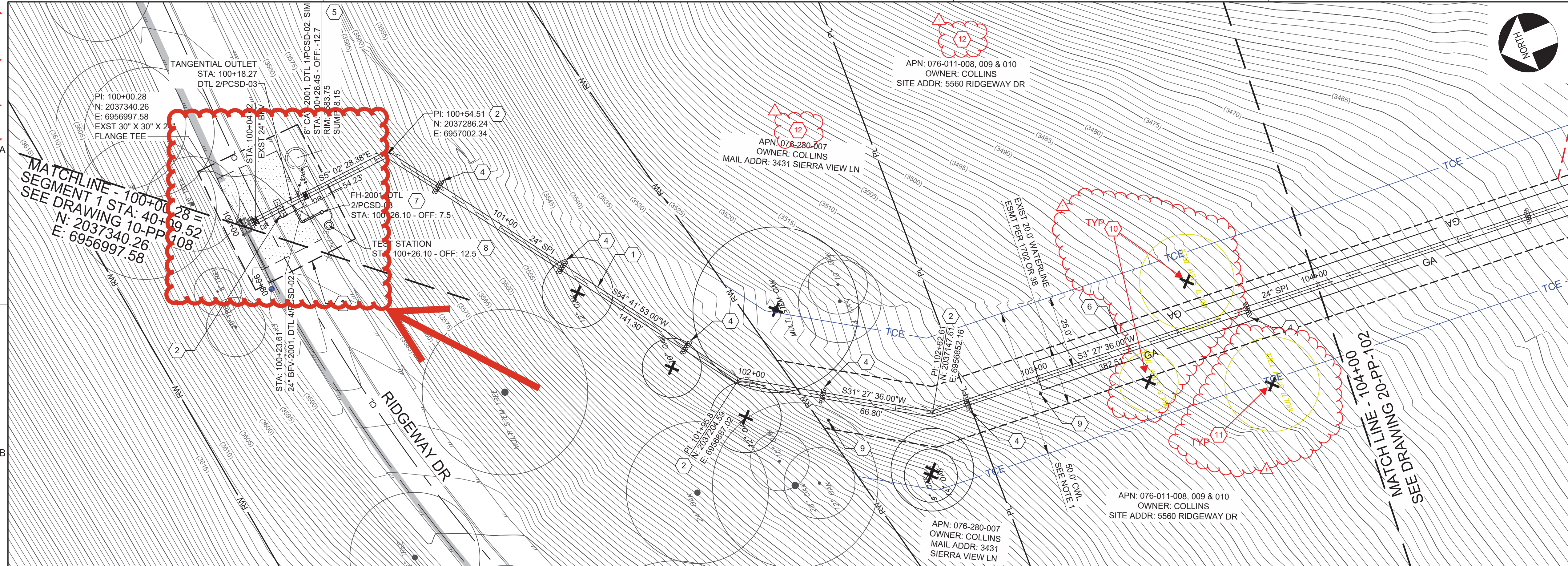
- GENERAL NOTES:
1. LIMIT WORK ACTIVITIES TO CONSTRUCTION WORK LIMITS (CWL), PUBLIC RIGHT-OF-WAY, AND STAGING AREAS DEFINED HEREIN. ACCESS TO CWL AND STAGING AREAS SHALL BE PER APPROVED ACCESS ROUTES.
 2. COMPLY WITH CIVIL GENERAL NOTES AND PERMITTING GENERAL NOTES.
 3. COMPLY WITH SEQUENCING REQUIREMENTS ON DWG PC-05.
 4. COMPLY WITH EDC ENCROACHMENT PERMIT AND SPECIAL EVENT PERMIT APPLICATION REQUIREMENTS. ASSUME RIDGEWAY DRIVE IS SUBJECT TO FULL CLOSURE AT STA 40+10.

- KEY NOTES:
1. REUSE EXST 24" MH DIP TRANSMISSION PIPELINE. NO IMPROVEMENTS REQUIRED. VERIFY ELECTRICAL CONTINUITY BETWEEN STA 29+94.14 TO 40+09.52.
 2. SEE DWG PC-19 FOR SPI TO MOOSE HALL AREA IMPROVEMENTS AND CONNECTION DETAILS. VERIFY ALL EXST UTILITIES (HORIZONTAL LOCATION, DEPTH, SIZE, AND ORIENTATION) WITHIN THE WORK AREA AND SUBMIT RESULTS TO ENGINEER MINIMUM OF 2 MONTHS PRIOR TO SCHEDULING CONSTRUCTION ACTIVITIES.
 3. ABANDON EXST 30" STL SPI PER DWG PCSD-12.
 4. INSTALL 2" SCH80 PVC FROM SPORTMANS PS ALONG FAC 10 (SEG1), FAC 20 (SEG2) AND FAC 30 (SEG3) TO THE FILTER BUILDING PER E-021 DETAIL C CONTAINING 24-PAIR (48 STRAND) SINGLE MODE FIBER WITH LOCATOR WIRE. 6" THICK PAVEMENT REPLACEMENT, 8" AB AND BACKFILL PER EDCO STD PLAN 119 ON PCSD-05. PAVEMENT REPLACEMENT LIMITS NOT DEPICTED IN PLAN.
 5. INSTALL 24"x36" PULLBOX PER E-021 DETAIL F



VERIFY SCALE BAR IS ONE INCH ON ORIGINAL DRAWING 0 IF NOT ONE INCH ON THIS SHEET, ADJUST SCALES ACCORDINGLY		<table><tr><td>05/09/2024</td><td>ADDENDUM 3</td><td>AC</td><td>TL</td></tr><tr><td>4-23-24</td><td>ADDENDUM 2</td><td>TL</td><td>TL</td></tr><tr><td>NO</td><td>DATE</td><td>REVISION</td><td>BY</td></tr></table>		05/09/2024	ADDENDUM 3	AC	TL	4-23-24	ADDENDUM 2	TL	TL	NO	DATE	REVISION	BY			<table><tr><td>DESIGN P. WEBSTER</td></tr><tr><td>DRAWN M. TRUITT</td></tr><tr><td>CHECKED T. DURBIN</td></tr><tr><td>APPROVED M. FISHER</td></tr></table>		DESIGN P. WEBSTER	DRAWN M. TRUITT	CHECKED T. DURBIN	APPROVED M. FISHER					EL DORADO IRRIGATION DISTRICT SLY PARK INTERTIE IMPROVEMENTS PROJECT		PLAN AND PROFILE SEGMENT 1 PLAN AND PROFILE STA 39+25 TO END		<table><tr><td>PROJECT NO. 21079.01</td></tr><tr><td>DRAWING NO. 6513</td></tr><tr><td>SHEET NO. 10-PP-108</td></tr><tr><td>55 OF 266</td></tr></table>		PROJECT NO. 21079.01	DRAWING NO. 6513	SHEET NO. 10-PP-108	55 OF 266
05/09/2024	ADDENDUM 3	AC	TL																																		
4-23-24	ADDENDUM 2	TL	TL																																		
NO	DATE	REVISION	BY																																		
DESIGN P. WEBSTER																																					
DRAWN M. TRUITT																																					
CHECKED T. DURBIN																																					
APPROVED M. FISHER																																					
PROJECT NO. 21079.01																																					
DRAWING NO. 6513																																					
SHEET NO. 10-PP-108																																					
55 OF 266																																					

CONFORMED SET (07/16/24)



GENERAL NOTES:

1. LIMIT WORK ACTIVITIES TO CONSTRUCTION WORK LIMITS (CWL), PUBLIC RIGHT-OF-WAY, AND STAGING AREAS DEFINED HEREIN. ACCESS TO CWL AND STAGING AREAS SHALL BE PER APPROVED ACCESS ROUTES.
2. COMPLY WITH CIVIL GENERAL NOTES AND PERMITTING GENERAL NOTES.
3. COMPLY WITH SEQUENCING REQUIREMENTS ON DWG PC-05.
4. COMPLY WITH ALL EDC ENCROACHMENT PERMIT REQUIREMENTS.

KEY NOTES: #

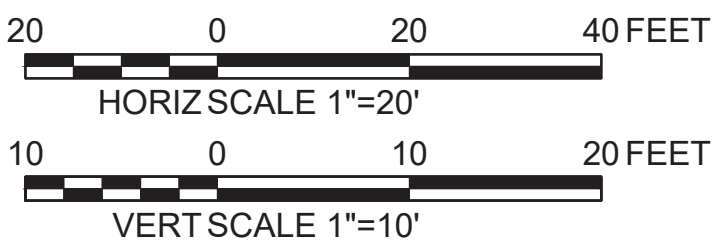
1. INSTALL 24" SPI WSP PER DWG PC-03 SCHEDULES AND VIA OPEN CUT CONSTRUCTION PER DTL 1/PCSD-06. ASSUME REPLACE IN PLACE CONDITIONS AND DEMOLISH EXISTING 22" SPI STEEL PIPE AS NEEDED WHERE LOCATED WITHIN 2-LF CLEAR OF NEW PIPE.
2. INSTALL THRUST BLOCKS AND INLINE THRUST WALLS WHERE SPECIFIED PER DWG PC-04 SCHEDULES. INLINE THRUST WALL SYMBOLIZATION IS TYPICAL AND NOT TO SCALE. THRUST BLOCKS ARE NOT DEPICTED. REFER TO THE SCHEDULE STANDARD DETAIL REFERENCE FOR ACTUAL SIZES.
3. SEE DWG PCSD-03 FOR SPI TO MOOSE HALL AREA IMPROVEMENTS AND CONNECTION DETAILS. VERIFY ALL EXST UTILITIES (HORIZONTAL LOCATION, DEPTH, SIZE, AND ORIENTATION) WITHIN THE WORK AREA AND SUBMIT RESULTS TO ENGINEER MINIMUM OF 2 MONTHS PRIOR TO SCHEDULING CONSTRUCTION ACTIVITIES.
4. INSTALL GROUNDWATER RELIEF TRENCH DAMS AND DRAINS PER DWG PC-04 SCHEDULES.
5. INSTALL STA 100+25 VALVES AND APPURTENANCES PER DWG PC-03 SCHEDULES AND VIA OPEN CUT CONSTRUCTION PER DTL 1/PCSD-05, SIM.
6. INSTALL GRAVEL ACCESS SURFACE, WATER BARS, ROLLING DIPS, CULVERTS, AND STEEP SLOPE SURFACE STABILIZATION PER DWG PCSD-13 TYP SECTIONS AND SCHEDULES.
7. INSTALL STA 100+26 FIRE HYDRANT ASSEMBLY PER DWG PC-03 SCHEDULES AND VIA OPEN CUT CONSTRUCTION PER DTL 1/PCSD-05.
8. INSTALL TEST STATION PER TEST STATION SCHEDULE ON DWG 45-CP-01.
9. INSTALL UTILITY MARKER POST IDENTIFYING SPI PIPELINE PRESENCE PER EID STD DWG W27. CONTRACTOR SHALL STENCIL IN THE FOLLOWING INFORMATION "SPI STA-XY+XY OFF: +/-XYZ". UPDATE "XYZ" TEXT WITH VERIFIED STATIONING AND OFFSETS IN THE FIELD.

LEGEND FOR TREE AND TREE REMOVAL:

- EXST TREE TO REMAIN
- ✕ EXST SURVEYED TREE TO BE REMOVED, TYP OF 6
- ✕ EXST TREE NOT SURVEYED TO BE REMOVED, TYP OF 3

LEGEND:

- PERMANENT EASEMENT
- EXISTING EASEMENT
- TCE TEMPORARY CONSTRUCTION EASEMENT
- CONSTRUCTION ACCESS ROUTE
- CONSTRUCTION STAGING AREA
- EXISTING SLY PARK INTERTIE



VERIFY SCALE

BAR IS ONE INCH ON ORIGINAL DRAWING
0
IF NOT ONE INCH ON THIS SHEET, ADJUST SCALES ACCORDINGLY

NO	DATE	REVISION	BY	APVD
05/09/2024	ADDENDUM 3		AC	TL
04/24/2024	ADDENDUM 2		MJF	MJF



DESIGN
P. WEBSTER
DRAWN
M. TRUITT
CHECKED
T. DURBIN
APPROVED
M. FISHER



ROSEVILLE, CA



EL DORADO IRRIGATION DISTRICT

SLY PARK INTERTIE IMPROVEMENTS PROJECT

PLAN AND PROFILE

SEGMENT 2 REACH 1
PLAN AND PROFILE
BEG TO STA 104+00

PROJECT NO.
21079.01

DRAWING NO.
6513

SHEET NO.
20-PP-101

56 OF 266